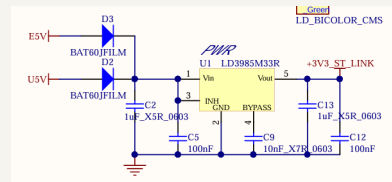
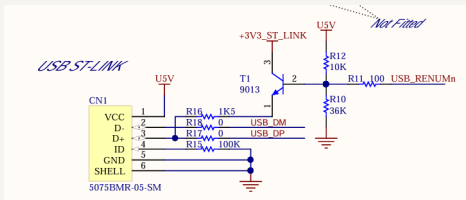
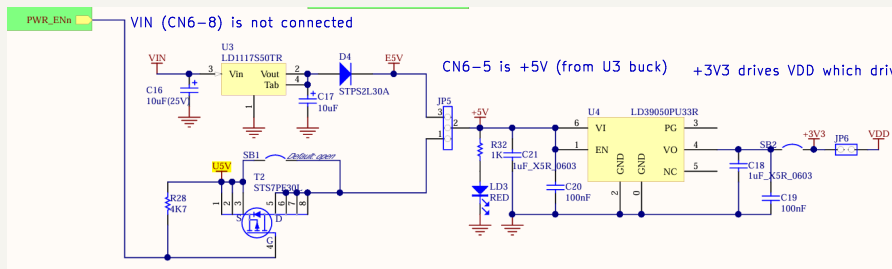


Power wiring for MRI robot.
 1. estop button at in control room
 2. estop button near robot
 3. MRI robot power and STM32 power is disabled completely during MRI scan
 4. USB
 relay: <https://www.amazon.com/JESSINIE-Lightweight-Intelligent-Overcurrent-Protection/baud-rate-of-9600;0xA0-01-01-A2-to-open-the-relay;send-0xA0-01-00-A1-to-close-the-relay;4.1-USB-relay-mounted-in-box-uses-standard-USB-male-to-male-cable>
 5. Schneider Electric SSP1D425BDT solid state relay
 6. +5V is needed for USB, level shift, optical encoder

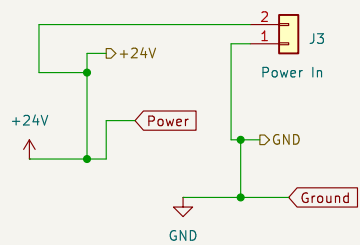
STM32- STLink USB connector



CN7-6 is E5V (external 5V)



Nucleo446RF jumpers	
JP5 2-3	F5V=+5V



Sheet: /24VoltPowerSupply/
File: PS24V.kicad_sch

Title:

Size: A4

Date:

Rev:

KiCad E.D.A. 9.0.0

Id: 2/2